

REVISIONS				
ZONE	REV.	DESCRIPTION	DATE	APPROVED

SPECIFICATIONS													
Frequency	12 GHz												
Output Power	3 dBm												
Bias Voltage	5 Volts												
Tuning Voltage	0V to 5V												
Tuning Sensitivity	100KHz/V minimum												
Thermal Drift	2ppm/C												
Harmonics	-25 dBc												
Phase noise @25° C	<table border="1"> <thead> <tr> <th>Offset</th> <th>dBc/Hz</th> </tr> </thead> <tbody> <tr> <td>1 KHz</td> <td>-90</td> </tr> <tr> <td>10KHz</td> <td>-114</td> </tr> <tr> <td>100KHz</td> <td>-135</td> </tr> <tr> <td>1 MHz</td> <td>-140</td> </tr> <tr> <td>10 MHz</td> <td>-165</td> </tr> </tbody> </table>	Offset	dBc/Hz	1 KHz	-90	10KHz	-114	100KHz	-135	1 MHz	-140	10 MHz	-165
	Offset	dBc/Hz											
	1 KHz	-90											
	10KHz	-114											
	100KHz	-135											
1 MHz	-140												
10 MHz	-165												
Operating Temperature	-40 C to 70 C												
<b>Maximum Ratings</b>													
Storage Temp Range	-40 C to 100 C												
Bias Voltage	6 V												
DC at RF Output	20 Volts												

**CAUTION! ESD SENSITIVE PARTS! HANDLE ONLY AT AN ESD SAFE WORK AREA! OPERATOR MUST BE PROPERLY GROUNDED!**

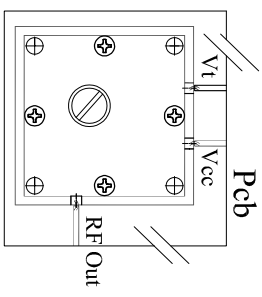
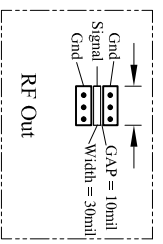
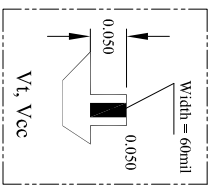
**PRINCETON MICROWAVE PROPRIETARY DOCUMENT**

UNLESS OTHERWISE SPECIFIED DIMENSIONS ARE IN INCHES.			APPROVALS		DATE
FRACTIONS <small>32/64</small> DECIMALS <small>.XX ±0.01</small> ANGLES <small>.XXX ±0.1</small>	DRAWN I LIVERPOOL	11/4/2025	CHECKED	ENG.	MFG.
MATERIAL	P.C.	D.A.	DO NOT SCALE DRAWING	SCALE N/A	SHEET 1 OF 1

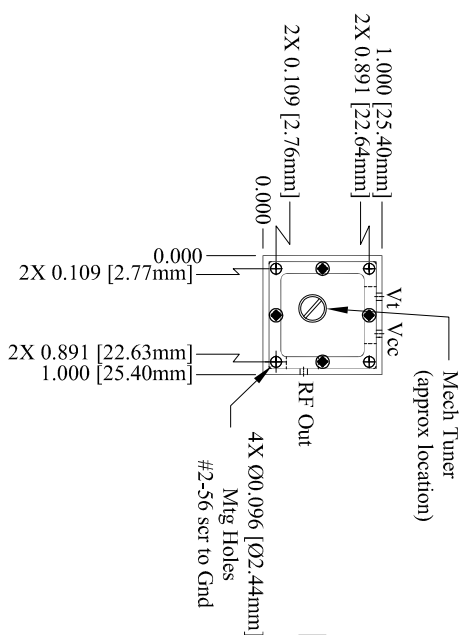
PmT Princeton Microwave Technology Inc. <small>3 Nam Lane Unit C-50 Murray Hills, NJ 08857</small>			
MODEL #: PmT-THE-DIDROA-12 OUTLINE			
SIZE B	CAGE CODE OVSA4	DWG NO. MO-600-167-00-RA	REV. A

4 3 2 1

ZONE	REV.	DESCRIPTION	DATE	APPROVED



SPECIFICATIONS		
Frequency	12 GHz	
Output Power	3 dBm min	
Bias Voltage	5 Volts	
Thermal Drift	2ppm/C	
Output Impedance	50 Ohms	
Harmonics	-25 dBc	
	Offset	dBc/Hz
	1 KHz	-95
	10 KHz	-120
	100 KHz	-142
	1 MHz	-145
	10 MHz	-170
Phase Noise @ 25°C		
Operating Temperature Range	-40°C to 100°C	
Maximum Ratings		
Storage Temp Range	-40°C to 70°C	
Bias Voltage	6 Volts	
DC at RF Output	+20 Volts	



NOTE:  
MOUNTING SCREWS: SCREW INTO BASE USING (4) #2-56 SCREWS OR M2x0.4

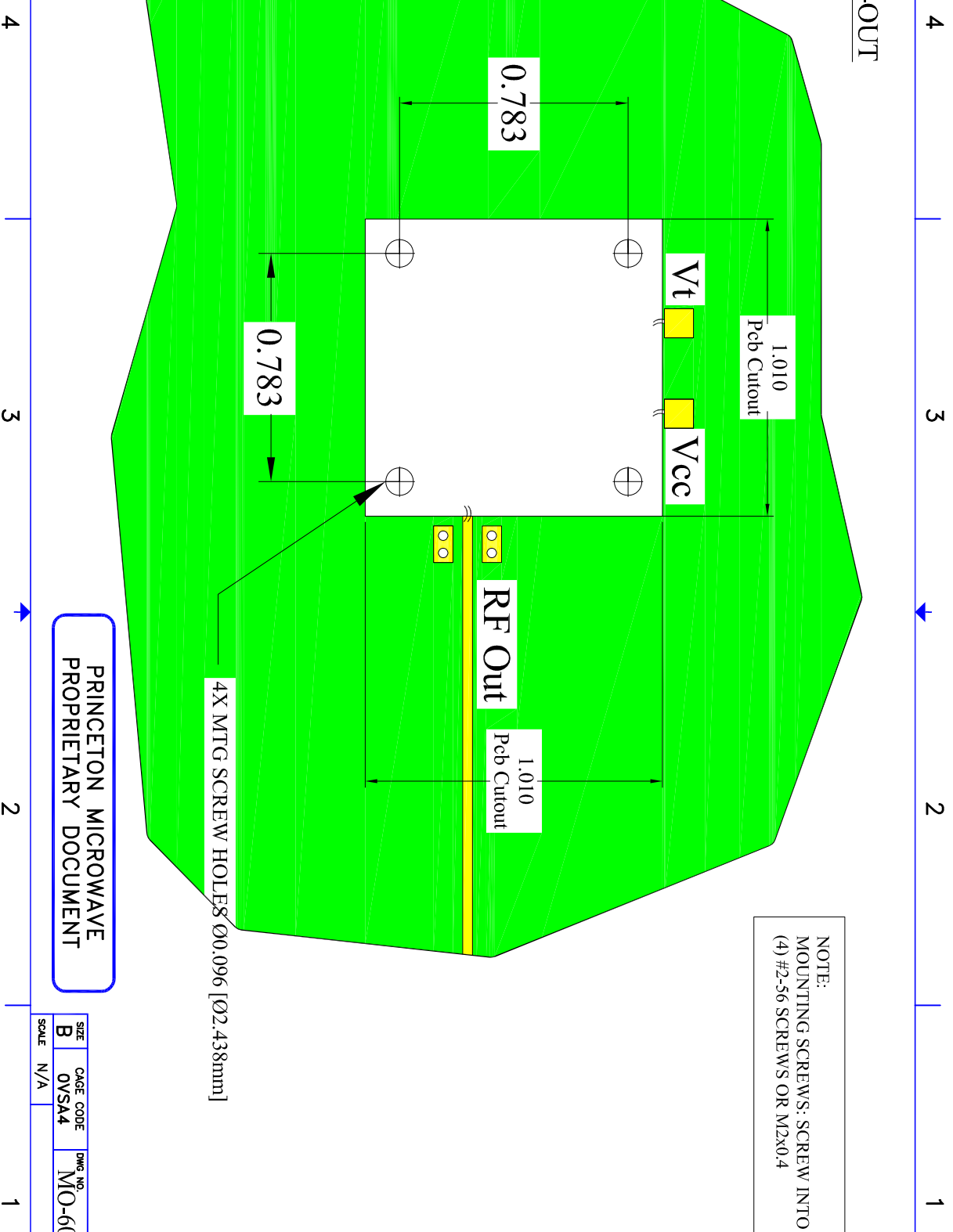
CAUTION! ESD SENSITIVE PARTS! HANDLE ONLY AT AN ESD SAFE WORK AREA! OPERATOR MUST BE PROPERLY GROUNDED!

PRINCETON MICROWAVE PROPRIETARY DOCUMENT

4 3 2 1

UNLESS OTHERWISE SPECIFIED DIMENSIONS ARE IN INCHES.		APPROVALS		DATE	<b>PmT</b> Princeton Microwave Technology Inc. 3 Miami Lane Unit C-10 Monroeville, NJ 08819
FRACTIONS	TOLERANCES DECIMALS	ANGLES	DRAWN	DATE	
E/N/A	.XX E/N/A	E/N/A	I LIVERPOOL	9/19/2021	<b>MODEL#: PmT-THE-DIDDR0B-12</b> <b>OUTLINE</b>
MATERIAL	.XXX E/N/A		CHKD.		
FINISH	N/A		ENG.		
			MFG.		
			P.C.		
			Q.A.		
DO NOT SCALE DRAWING					
SIZE	CAGE CODE	DWG NO.	REV.		
B	OVSAA4	MO-600-184-00-RA	A		
SCALE	2:1		SHEET	1 OF 2	

# PCB CUT-OUT



NOTE:  
MOUNTING SCREWS: SCREW INTO BASE USING  
(4) #2-56 SCREWS OR M2x0.4

PRINCETON MICROWAVE  
PROPRIETARY DOCUMENT

SIZE	CAGE CODE	DWG. NO.	REV.
B	0VSA4	MO-600-184-00-RA	A
SCALE	N/A	SHEET	2 OF 2